

GSCE

Reasoning Questions

Set- 12

Q.1. Merchant' is related to 'Trade' in the same way as 'Doctor' is related to:

- (a) Medicine
- (b) Prescription
- (c) Healing
- (d) Examination

Q.2. 'Fish' is related to 'Pisciculture' in the same way as 'Bees' is related to:

- (a) Horticulture
- (b) Apiculture
- (c) Sericulture
- (d) Viticulture

Q.3. Out of the four options given below, three are of a kind while one does not belong to the group. Choose the one which is unlike the others.

- (a) Circle : arc
- (b) TV : Screen
- (c) Book : Cover
- (d) Laptop : Charger

Q.4. What will come in place of the question mark in the following number series?

- 114 11510713470?
- (a) 140
 - (b) 35
 - (c) 195
 - (d) 150

Q.5. In a certain code, WORKABLE is written as VOYZPILD, how will BLUNDERS be written in same code?

- (a) CMVOEST
- (b) TSEOVMC
- (c) YOFMWVIH
- (d) HIVWMFOY

Q.6. Statements: All purses are mobile. All mobile are phones. Some mobile are rings. No ring is purse.

Which Conclusion is right?

- (a) Some purse is ring.
- (b) No mobile is ring.
- (c) Some phones are purse.
- (d) All rings are mobile.

Q.7. D, the son-in-law of B, is the brother-in-law of A who is the brother of C. How is A related to B?

- (a) Brother
- (b) Son
- (c) Father
- (d) None of these

Q.8. There are seven persons A, B, C, D, E, F and G sitting in a line facing west. E is to the immediate right of G. B is at one of the extreme ends and has E as his neighbour. G is between E and F. C is sitting second from the south end. Who is sitting at the southern end?

- (a) A
- (b) B
- (c) C
- (d) E

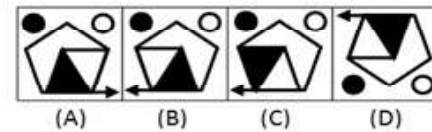
Q.9. A man starts walking towards Northeast diagonally from the left corner of a square plot and turns right after reaching the center of the plot. After some distance he again turns right and continues walking. Which direction is he facing now?

- (a) East
- (b) West
- (c) South
- (d) North

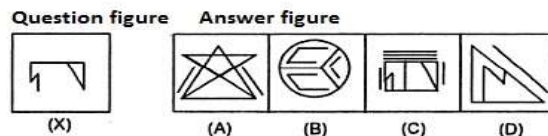
Q.10. Out of the five given figures, four are similar in a certain way. One figure is not like the other four. Find out the figure which does not belong to the group, i.e., which does not share the common features/ characteristics with other four figures:



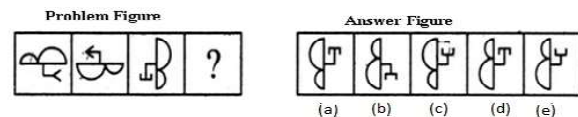
Q.11. Choose the alternative which closely resembles the mirror image of the given figure:



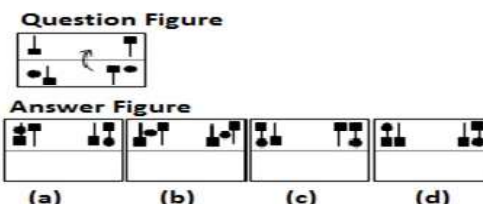
Q.12. Which image fits in the answer figure?



Q.13. Which answer figure will replace the question mark?



Q.14. In the following example, find the one which resembles the pattern formed when the transparent sheet, carrying a design is folded along the dotted line along the direction shown by the arrow.



GSCE

George School of
Competitive Exams

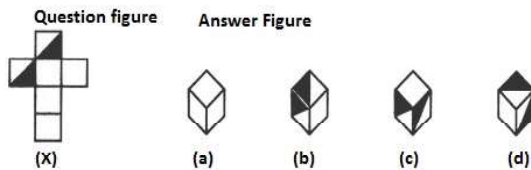
George Telegraph • Since 1920

GSCE

Reasoning Questions

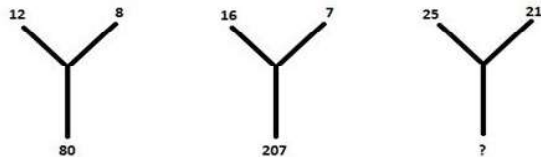
Set- 12

Q.15. Choose the box that is similar to the box formed from the given sheet of paper (X).



- (a) a and d only
(b) c and d only
(c) a and b only
(d) b and c only

Q.16. Find the missing figure:



- (8a) 184
(b) 198
(c) 196
(d) 192

Q.17. A statement is given in the following question and it is followed by its four alternatives in which one alternative either support or refute the statement. Find out the alternative from each question.

Statement: Stitch in time, saves nine.

Conclusion:

- I. The person who is punctual, always has some spare time.
II. One should always plan a time-schedule for work.

- (a) I only
(b) II only
(c) Both I and II
(d) Neither I nor II

Direction (18 - 20): Study the following arrangement of the English alphabet and answer the questions given below.

U Q N K L D I M Y V B X P Z E O W T C F S J R H A G

Q.18. Which letter is tenth to the right of the letter which is exactly the middle letter between U and W?

- (a) W
(b) T
(c) S
(d) None of these

Q.19. Four of the following five are alike in a certain way based on their position in the above arrangement and hence form a group. Which one does not belong to that group?

- (a) YIB
(b) VXM
(c) SCR
(d) LNI

Q.20. Amit is cleverer than Rohan. Sudeep is cleverer than Amit, but not more than Harshit. Garima is the cleverest of them all. If they are arranged in ascending order of cleverness, then who among the following will hold the middle position?

- (a) Amit
(b) Rohan
(c) Sudeep
(d) Harshit

Q.21. If P means 'add to', V means 'multiply by', M means 'subtract from' and L means 'divide by' then

30 L 2 P 3 V 6 M 5 = ?

- (a) 18
(b) 28
(c) 31
(d) 103

Q.22. Arrange the following words in a meaningful order

1. Tamil Nadu
2. Universe
3. Madurai
4. World
5. India

- (a) 3, 1, 4, 5, 2
(b) 1, 3, 5, 4, 2
(c) 3, 1, 5, 4, 2
(d) 3, 1, 2, 4, 5

Q.23. Arrange the following words in a meaningful order

1. Rain
2. Monsoon
3. Rescue
4. Flood
5. Shelter

- (a) 1, 2, 3, 4, 5,
(b) 1, 2, 4, 5, 3,
(c) 2, 1, 4, 3, 5,
(d) 4, 1, 2, 3, 5,

Q.24. In a certain coded language BAT is coded as 2012, BALL is coded as 121212. What will be the coded of BOWLER?

- (a) 1851223152
(b) 1815221352
(c) 95323152
(d) 185223152

Q.25. Select the missing number from the given responses.

2	4	3	4	6	-2
1	8	2	24	-5	?

- (a) 45
(b) 60
(c) 70
(d) None of these



GSCE

George School of
Competitive Exams

George Telegraph • Since 1920

GSCCE

Reasoning Questions

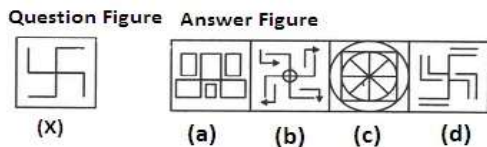
Set- 12

Q.26. Choose the alternative which is closely resembles the mirror image of the given combination.

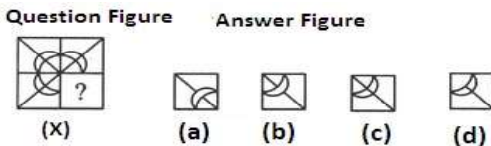
MALAYALAM

- (a) MALAYALAM
- (b) MALAYALAM
- (c) MALAYALAM
- (d) MALAYALAM

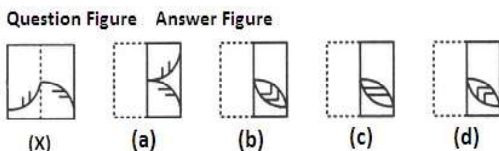
Q.27. Find out the alternative figure which contains figure (X) as its part.



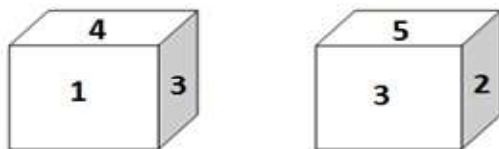
Q.28. Find out the alternative figure which contains figure (X) as its part.



Q.29. Find out from amongst the four alternatives as to how the pattern would appear when the transparent sheet (X) is folded at the dotted line.



Q.30. Two positions of a cube are as follows.



Point out which number will be on the top if number 3 is at the bottom.

- (a) 1
- (b) 5
- (c) 6
- (d) 2

Q.31. 'School' is related to 'Principal' in the same way as 'Office' is related to:

- (a) Manager
- (b) Computer
- (c) Teacher
- (d) Files

Q.32. 'Divorce' is related to 'Marriage' in the same way as 'False' is related to:

- (a) Fiction
- (b) Lie
- (c) True
- (d) Story

Q.33. Out of the four options given below, three are of a kind while one does not belong to the group. Choose the one which is unlike the others.

- a) Chili
- b) Potato
- c) Brinjal
- d) Tomato

Q.34. What will come in place of the question mark in the following number series?

15, 45, 135, 405, ?, 3645

- a) 945
- b) 650
- c) 550
- d) 1215

Q.35. In a certain code language '123' stands for 'I am servant', '279' stands for 'servant always miserable' and '684' stands for 'poverty is curse', then which numeric value stands for 'always'?

- a) 6
- b) 7
- c) 4
- d) Cannot be determined

Q.36. Given question have some statements and some conclusions. Choose the conclusion that logically follows:

Statements: All powers are heats. Some forces are heats. All forces are energies.

Conclusions:

I. At least some heats are energies.

II. No power is a force.

- a) Only conclusion I is true
- b) Only conclusion II is true
- c) Both conclusion I and II are true
- d) Either conclusion I or II is true

Q.37. If U + V means U is the brother of V, W - X means W is the father of S, X ÷ Y means X is the sister of Y, Y × Z means Z is the mother of Y. Which of the following means that N is the mother of O?

- a) L + M ÷ N × O
- b) L - M × O ÷ P
- c) M + L ÷ O × N
- d) N ÷ M × L ÷ O

Q.38. Answer the question on the basis of the information given below.

A, B, C, D, E, F, G and H are sitting around a circular table facing center. H is fourth to the left of B and second to the right of F. A is third to the left of C, who is not an immediate neighbor of F. G is second to the left of A. D is second to the right of E.

Who is on the immediate right of F?

- a) H
- b) A
- c) G
- d) E

Q.39. From his house, Pradeep went 25 km to the North. Then he turned west and covered 15 km. Then, he turned south and covered 10 km. Finally, turned to East, he covered 15 km. In which direction is he from his house?

- a) North
- b) South
- c) West
- d) East



GSCCE

**George School of
Competitive Exams**

George Telegraph • Since 1920

GSCCE

Reasoning Questions

Set- 12

Q.40. Arrange the given words in alphabetical order and tick the one that comes in the last?

- a) Efflorescent
- b) Entry
- c) Entreat
- d) Ensure

Q.41. Arrange the given words in alphabetical order and tick the one that comes in the last?

- a) Signature
- b) Sight
- c) Sign
- d) Significance

Q.42. In a row of students, If M who is 10th from the left and N who is 9th from the right interchange their positions; M becomes 25th from the left. How many students are there in the row?

- a) 34
- b) 32
- c) 33
- d) 35

Q.43. If + means \div , \times means $-$, \div means \times and $-$ means $+$, then $16 + 12 \times 8 \div 6 - 8 = ?$

- a) -12
- b) -20/3
- c) 20/3
- d) -116/3

Q.44. Arrange the following in a logical order:

1. Table 2. Tree 3. Wood 4. Seed 5. Plant

- a) 4, 5, 3, 2, 1
- b) 4, 5, 2, 3, 1
- c) 1, 3, 2, 4, 5
- d) 1, 2, 3, 4, 5

Q.45. Arrange the following in a logical order:

1. Post box 2. Letter 3. Envelope 4. Delivery 5. Clearance

- a) 2, 1, 5, 3, 4,
- b) 2, 3, 1, 5, 4
- c) 3, 2, 1, 5, 4
- d) 3, 2, 4, 5, 1

Q.46. If 'A' denotes "divided by", 'B' denotes "added to", 'X' denotes "subtracted from", 'R' denotes "multiplied by", then $18 R 12 A 4 X 8 B 6 = ?$

- a) 52
- b) 102
- c) 45
- d) 32

In the following questions find out the alternative which will replace the question mark.

Q.47. Precocious : Futile :: Exquisite : ?

- (a) Grandiose
- (b) Outburst
- (c) Careless
- (d) Lifeless

29	13	18
33	A	19
30	27	3

Q.48. What is the missing number indicated above by A?

- a) 11
- b) 8
- c) 15
- d) 22

Q.49. The following question have one statement followed by two conclusions. Read and understand them carefully and then select your answer option as given below.

Statement: Some kings are queens. All queens are beautiful.

Conclusions:

I. All kings are beautiful.

II. All queens are kings.

- a) Only conclusion I follows.
- b) Only conclusion II follows.
- c) Neither conclusion I nor II follow.
- d) Either conclusion I or II follows.

Q.50. Among the five given figure, four figures follow the same pattern and one figure is different from these four. Choose the figure which is different from the rest.

