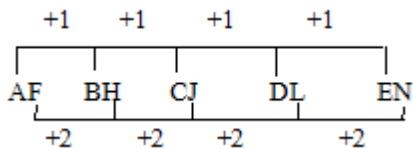


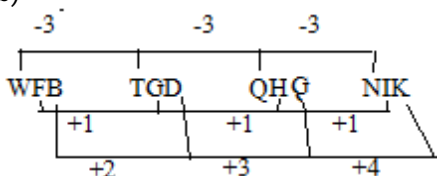
# Answer With Explanation

1. (a) Litre is unit of volume watt is unit of power.
2. (d) Lion lives in den similarly Rabbit lives in burrow.
3. (b) Chisel is use to make a carve similarly Sword is use to slaughter.
4. (b)  $A + 1 = B$ ,  $E - 1 = D$  Hence,  $E + 1 = F$ ,  $I - 1 = H$
5. (c)  $C+7$ ,  $F+7$ ,  $I+7 = JMP$  Hence,  $B+7$ ,  $E+7$ ,  $H+7 = ILO$
6. (c) Here all are reverse letters.
7. (c)  $2 \times 4 = 8$  so,  $3 \times 4 = 12$
8. (b)  $4^4 = 256$  so,  $6^6 = 1296$
9. (a)  $14 \times 3 - 2 = 40$ , hence,  $22 \times 3 - 2 = 64$
10. (d) Mobile is an electronic divice.
11. (a) rest are output device.
12. (a) rest are unit of measuring length.
13. (d) rest are consonant.
14. (d) rest are increase  $+2 + 2$
15. (d) rest are sum of original value is prime number.
16. (b) rest are cube numbers.
17. (a) rest are second number is the square of first number
18. (c) rest are difference between two numbers is perfect square.
19. (c)
20. (d)
21. (a)
22. (d) the series is  $1^2, 2^2, 4^2, 7^2, 11^2$
23. (b) the difference is  $+5, +10, +15$  then  $+20$
24. (c) the series is  $\times 2, \times 3, \times 4$  then  $\times 5$
25. (a)  $D+2=F+3=I+4=M+5=R$

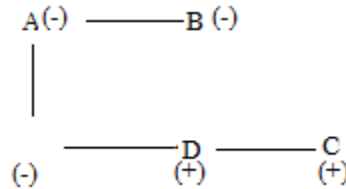


26. (b)

27. (b)



28. (d)



29. (c)  $C > E > B > A > D$

30. (a) This word has three 'E'

31. (b) CHINA

32. (a) the letters are written in reverse order

33. (b) here  $R=1$ ,  $E=2$ ,  $A=3$  and so on

34. (d) after interchange the equation is

$$42 \div 7 + 4 \times 10 - 4 = 6 + 40 - 4 = 42$$

35. (b)  $30 \div 6 - 7 + 10 = 8$

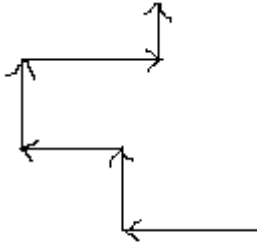
36. (c) here middle digit comes first then first digit and then 3<sup>rd</sup> digit

37. (a) column wise  $\sqrt{36} = 6 \times 2^2 = 24$

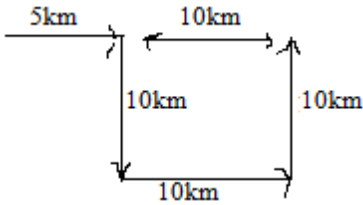
$$\sqrt{100} = 10 \times 4^2 = 160$$

38. (c) column wise  $(5+7) \div 6 = 2$  so,  $(9+7) \div 4 = 4$

39. (a) column wise  $(6 \times 4) - (5 \times 2) = 14$ , Hence,  $(6 \times 7) - (7 \times 4) = 14$

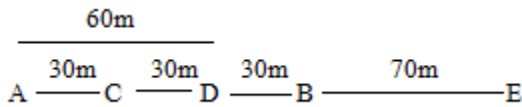


40. (a)



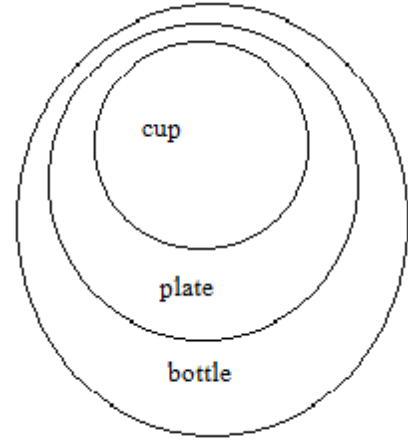
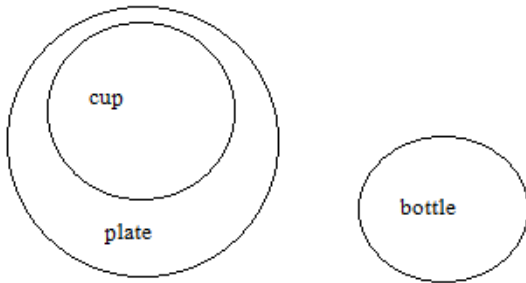
41. (c)

42. (b)



43. (b) three faces painted always 8

44.(c) clearly we see that no cup is bottle



45. (d)

Here , all cups are bottles (true)

Some cups are bottles (true) and no cup is bottle (false)

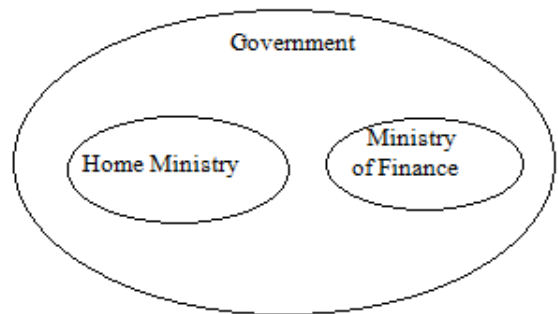
46. (c)

47. (b)

48. (b)

49. (c)

50. (d)



\*\*\* If any query about these questions, please contact 8167092555 from 10 am to 6 pm. \*\*\*